

OBD II Inspection Flow Charts

The flow charts are designed to help guide you through different inspection results you may encounter during the normal course of OBD II inspections and repairs.

The inspection types may be:

Initial Pass

Initial Fail

Initial Readiness Rejection

Retest / After Repairs Pass

Retest / After Repairs Fail

Retest / After Repairs Readiness Rejection

Following the flow charts as indicated will help prevent unnecessary time loss due to improper procedures.

In the event you encounter a vehicle that you are not able to “Ready” for an inspection or are not able to provide a waiver please call the station operator hot line at 1-888-265-5909 and ask for your call to be “Escalated”.

Be prepared to provide the following information to the call center:

Year, make, model of vehicle

Vehicle identification number (VIN)

Description of problem, i.e. readiness issue, waiver issue, etc.

Chart # 1 Inspection Chart

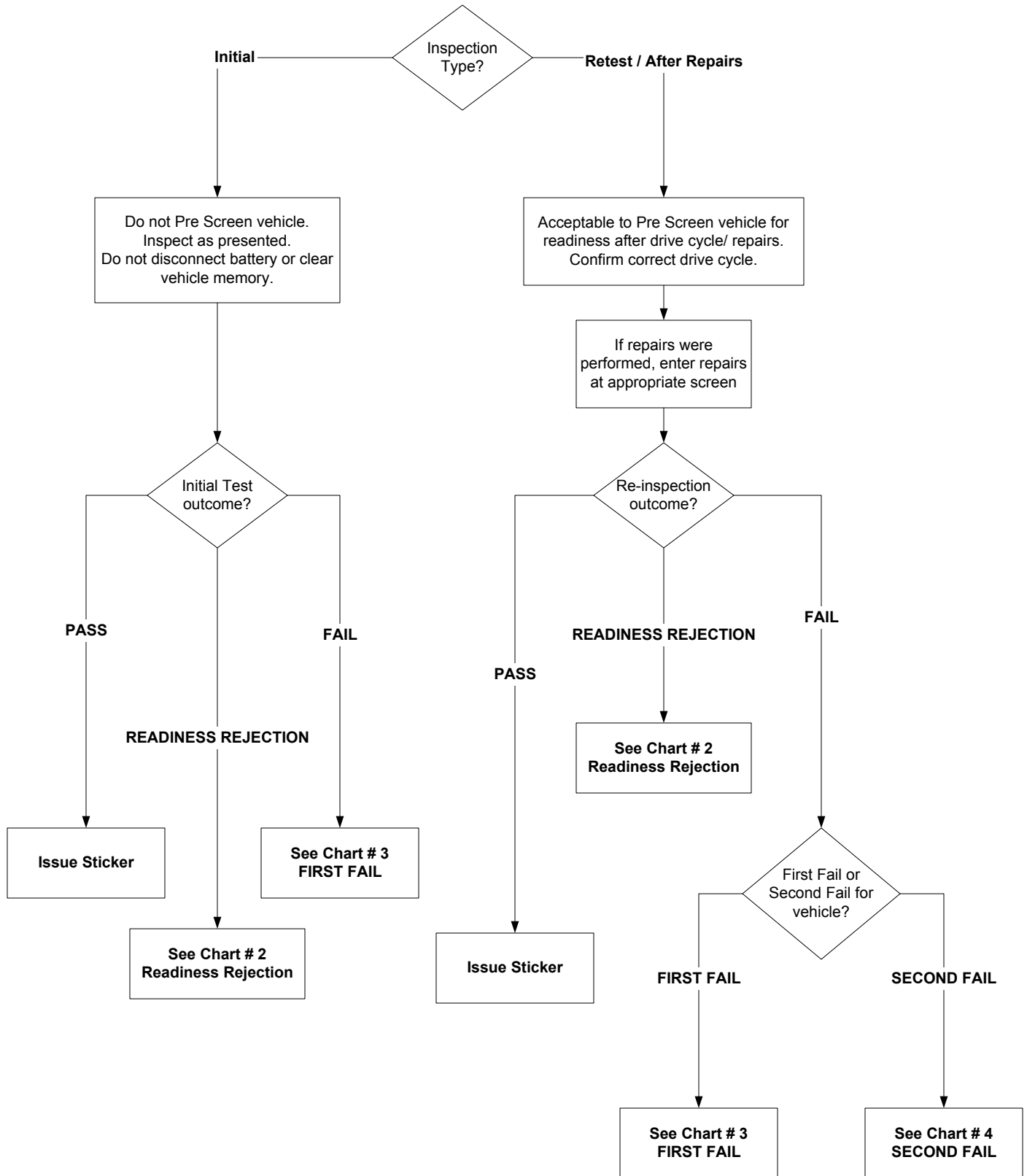


Chart # 2 Test Outcome: Readiness Rejection

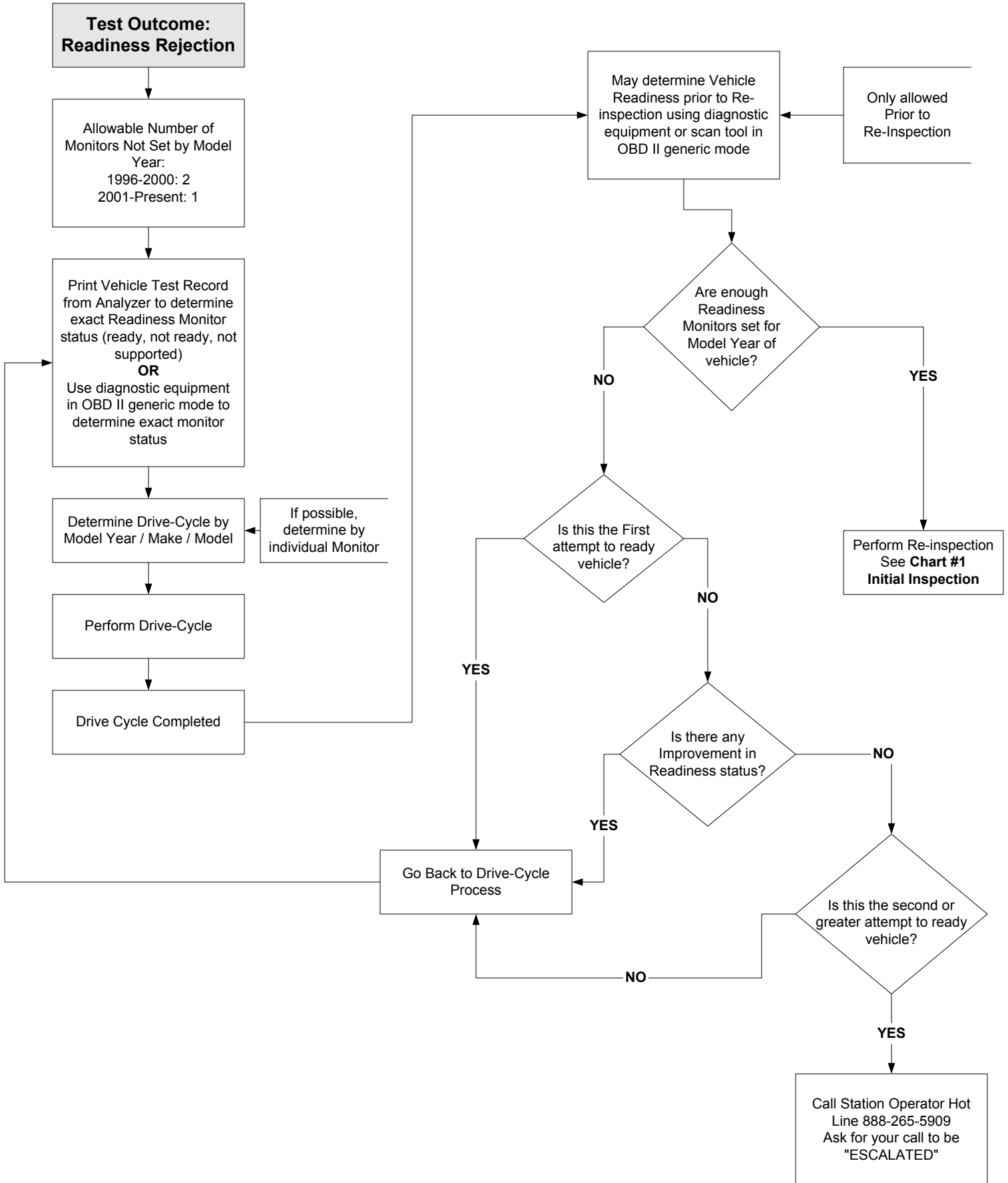


Chart # 3

Test Outcome: FIRST FAIL

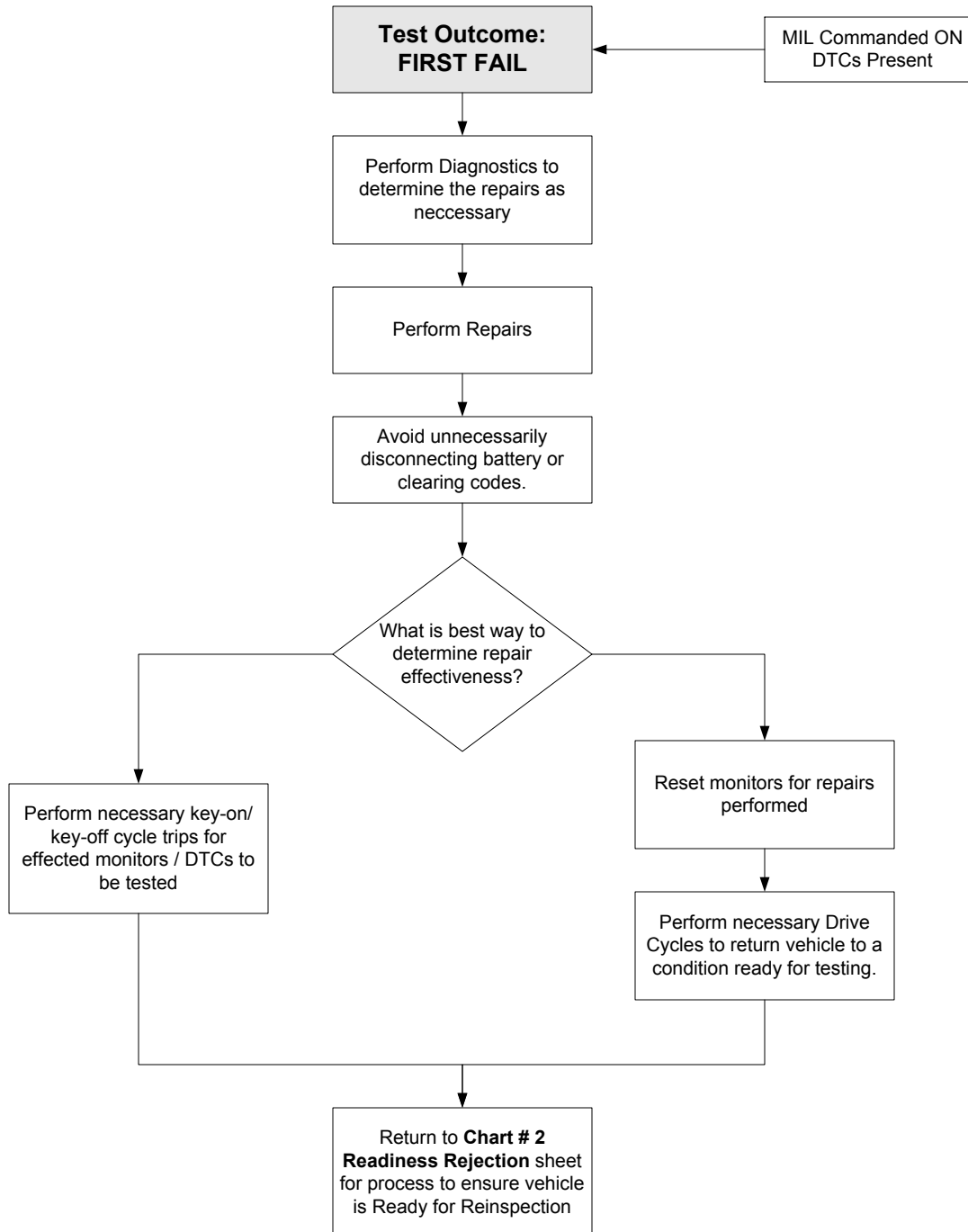


Chart # 4
Test Outcome: SECOND FAIL

